



Engineering Registration in Victoria for Geotechnical and Environmental Professionals in Mining

7pm AEDT
Tuesday 17 October 2023

Who are we?

Leigh Slomp FAusIMM(CP) FGS
Chief Advisor Professional Standards

Sandra Malbourne
Manager/Registrar Accreditation Programs

Email: CPD@ausimm.com

Background

Legislative Requirement


In 2019 the Victorian Government enacted the *Professional Engineers Registration Act 2019*, requiring registration for professional engineers providing certain services.

The *Act* covers five prescribed areas of engineering:

- Fire Safety
- Civil
- Structural
- Electrical
- Mechanical

Area of engineering	Date registration becomes mandatory
Fire safety engineer	1 December 2021
Civil engineer	1 October 2022
Structural engineer	1 October 2022
Electrical engineer	1 June 2023
Mechanical engineer	1 December 2023

Authorised Version



Victoria

Professional Engineers Registration Act 2019[†]
 No. 26 of 2019

[Assented to 3 September 2019]

The Parliament of Victoria enacts:

Part 1—Preliminary

1 Purposes

The purpose of this Act is to establish a scheme for the registration of professional engineers—

- (a) to promote best practice in providing professional engineering services; and
- (b) to ensure that professional engineering

Background

Legislative Requirement

It is an offence under section 67(1) of the Act for a person to provide **professional engineering services in or for Victoria** in any of the five areas of engineering listed in the Act unless they are:

- registered as a practising professional engineer in that area of engineering, or
- providing the professional engineering services under the '**direct supervision**' of a professional engineer who is registered to practise in that area of engineering.

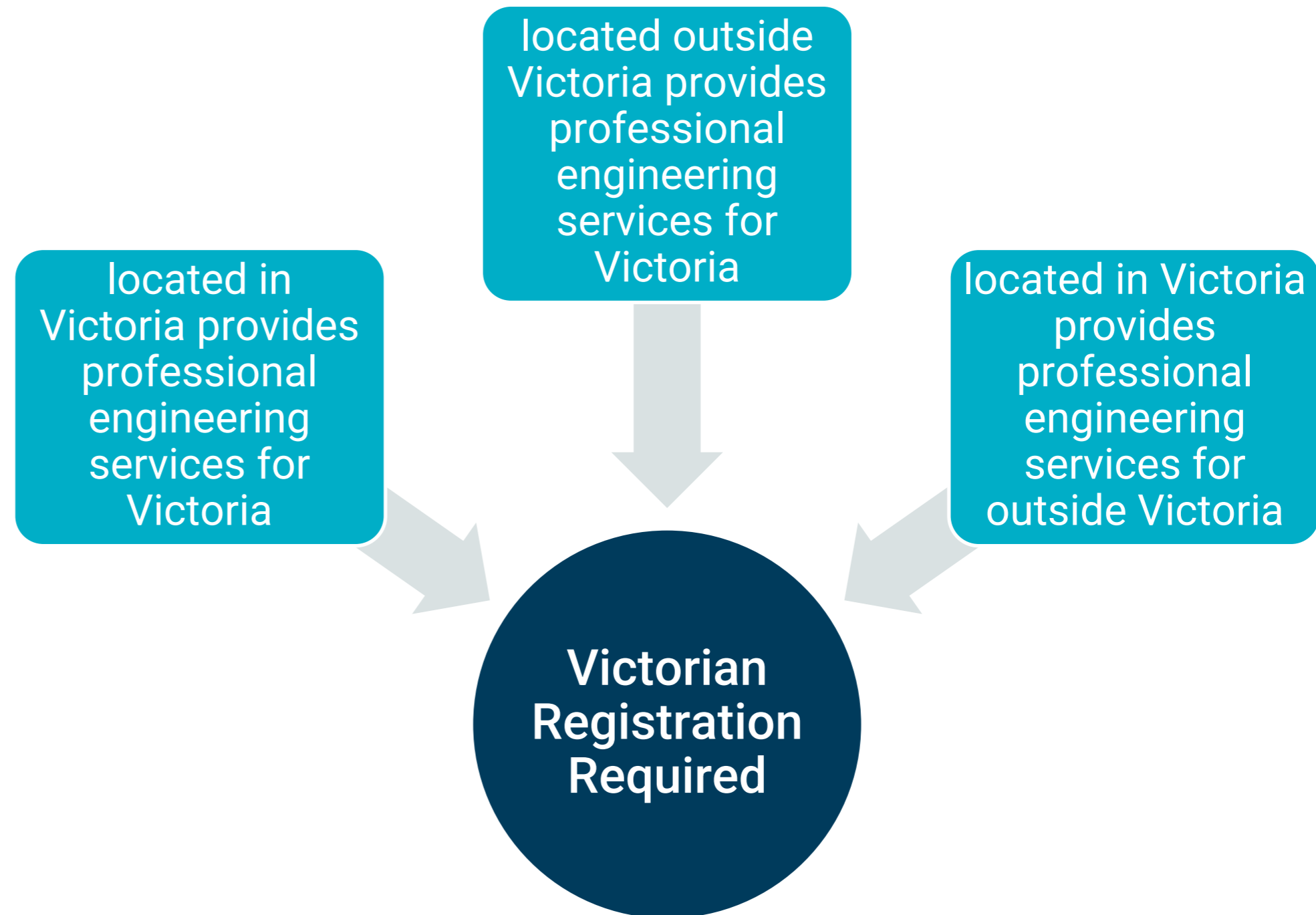
Further, it is an offence under section 68(4) of the Act for a person who is not a registered professional engineer to use the title 'professional engineer'.



Location of Services

In or For Victoria

The Act requires you to be registered with the Business Licensing Authority (BLA) to provide professional engineering services in a prescribed area of engineering in Victoria, or from a location outside Victoria, if the services are intended for Victoria.



Type of Services

What is a Professional Engineering Service?

An engineering service that requires, or is based on, the application of engineering principles and data to a:

- design relating to engineering, or
- construction, production, operation, or maintenance activity relating to engineering,

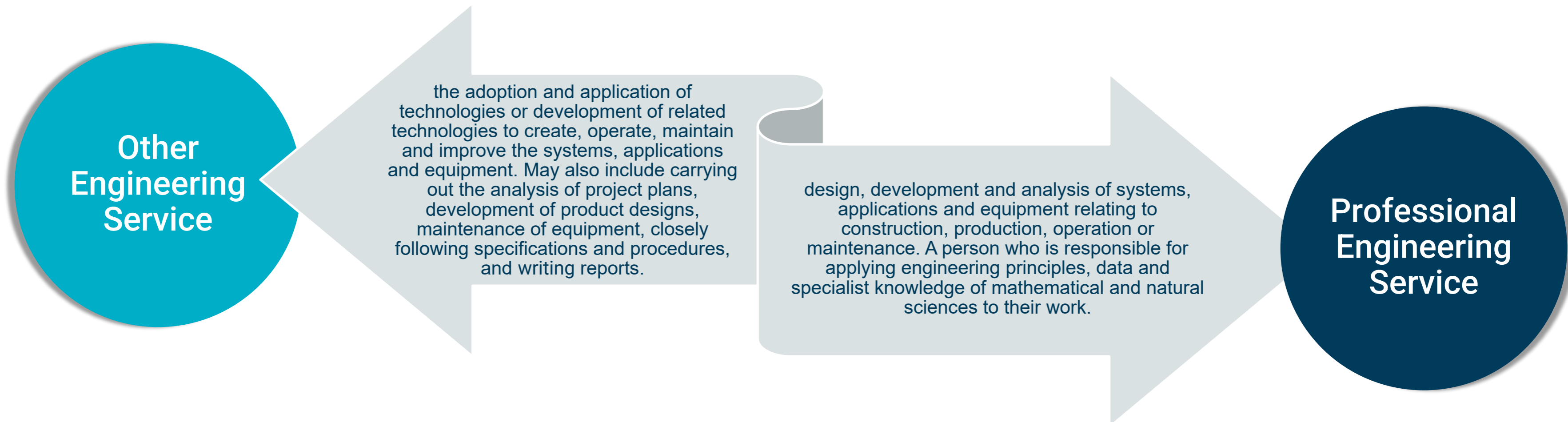
other than an engineering service that is provided only in accordance with a prescriptive standard.



Type of Services

What is a Professional Engineering Service?

A narrowly defined subset of engineering services that are characterised by the application of mathematics and scientific principles, judgement, knowledge and skill required to provide those services. Consistent with the attributes and competency profile as referenced in the International Professional Engineers Agreement (Washington Accord)



Type of Services

What is a Professional Engineering Service?

Professional Engineer

Define, investigate and analyse *complex* problems using data and information technologies where applicable

Design or develop solutions to *complex* problems considering a variety of perspectives and taking account of stakeholder views

Engineering Technologist

Identify, clarify, and analyse *broadly-defined* problems using the support of computing and information technologies where applicable

Design or develop solutions to *broadly-defined* problems considering a variety of perspectives.

Engineering Technician

Identify, state and analyse *well-defined* problems using the support of computing and information technologies where applicable

Design or develop solutions to *well-defined* problems

Yes

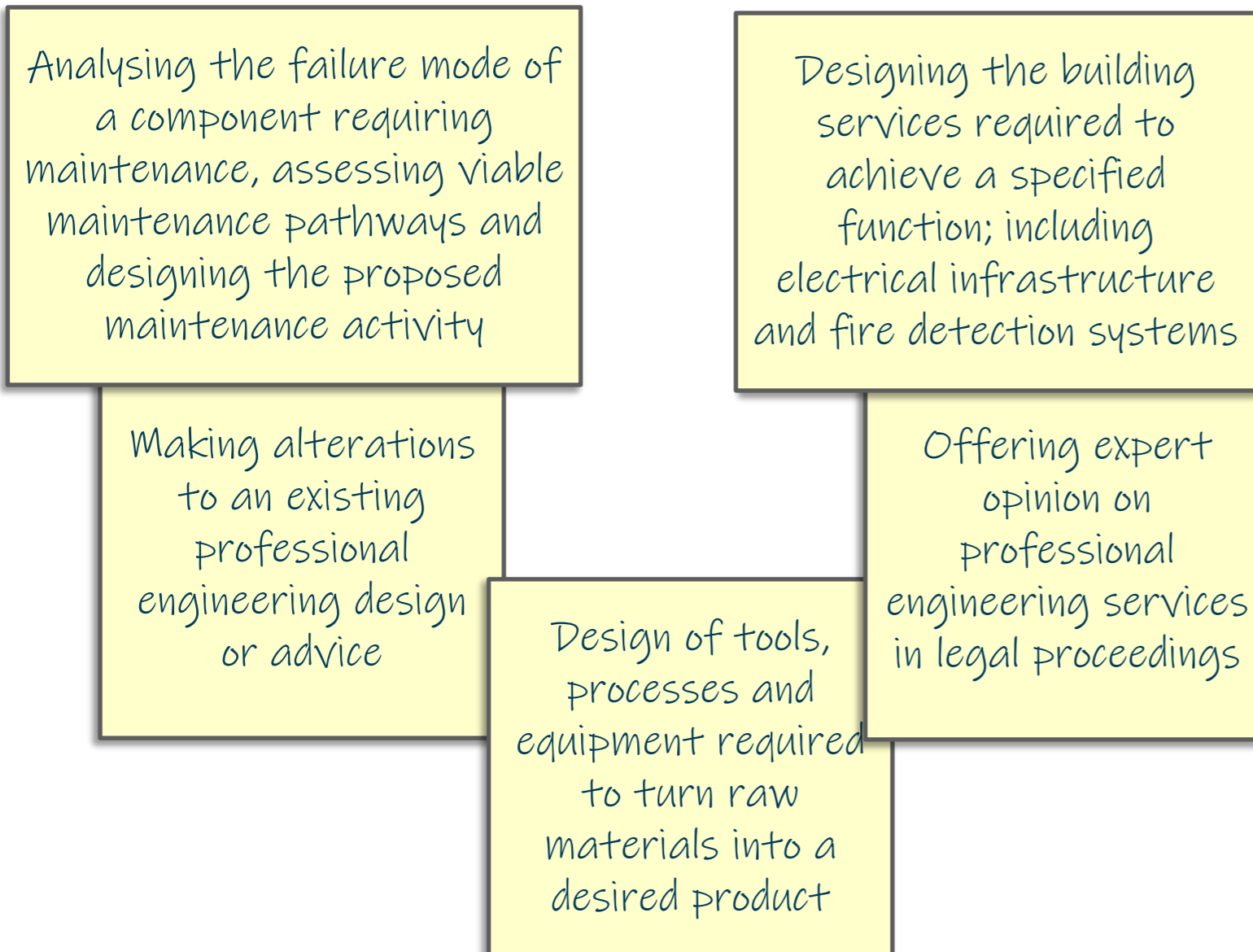
No

No

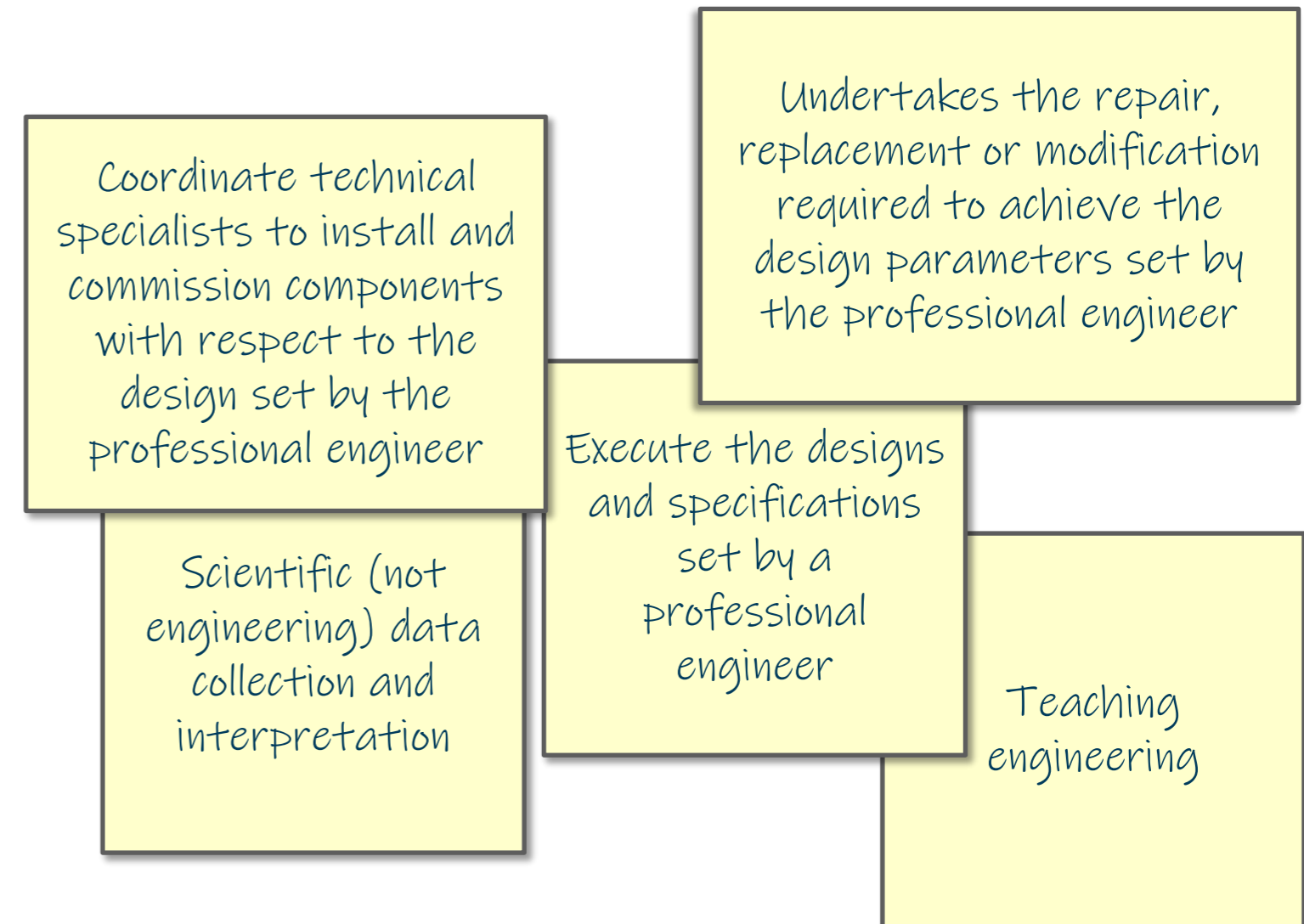
Type of Services

Examples

Professional Engineering Services



Other Engineering Services



Prescribed Area of Engineering

Civil Engineering

Civil engineering involves the research, design, construction, and maintenance of the natural and built environment. This may include:

- structures (including those made from steel, concrete or timber), e.g., roads, railways, bridges, airports, pipelines, dams, canals, harbours, dockyards, towers and buildings
- **analysing the likely behaviour of soil and rock when placed under pressure and designing above and below ground natural or build structures or foundations**
- **environmental impacts**, for example, transport, urban development and municipal services, resource protection of building and construction of other infrastructure and service industries, and
- **hydraulic supply and waste systems.**

Prescribed Area of Engineering

Civil Engineering

Each prescribed area of engineering has a specific definition and at this stage only some professional engineering services within the mining industry have been defined under the civil engineering category in the Victorian governments implementation of the Professional Engineers Registration Act 2019, these are:

Environmental Engineering (Mining)

A professional engineer who undertakes activities which aim to identify and minimise environmental harm being caused by single or multiple mining or mineral processing operations. Applicants will not be assessed for competencies that do not fall under the category of civil engineering, such as chemical, structural, mechanical and electrical.

Geotechnical Engineering (Mining)

A professional engineer who investigates, plans, designs, and monitors the process of creating fit-for-purpose mining excavations associated with the surface or underground excavation of an in-situ rock mass, or matters directly associated therewith, including the construction or excavation of in-pit or underground infrastructure, the construction of waste dumps and stockpiles, or tailings storage facilities, and the placement of backfill.

This area of focus **does not** include geotechnical investigation and design for the construction of civil infrastructure on a mine site, specifically including access roads and rail lines, foundations for the construction of buildings and processing facilities. The area of focus also does not cover civil tunnelling or civil underground storage.

Exemptions

You may not have to be Registered

You are exempt from being registered if you provide professional engineering services:

- under the **direct supervision** of a Registered Professional Engineer



- only in accordance with a **prescriptive standard**



Exemptions

Direct Supervision

Direct supervision means that the Registered Professional Engineer:

- has direct contact with the person they are supervising,
- directs that person to carry out professional engineering services, and
- oversees and evaluates their carrying out of those services.



Exemptions

Prescriptive Standard

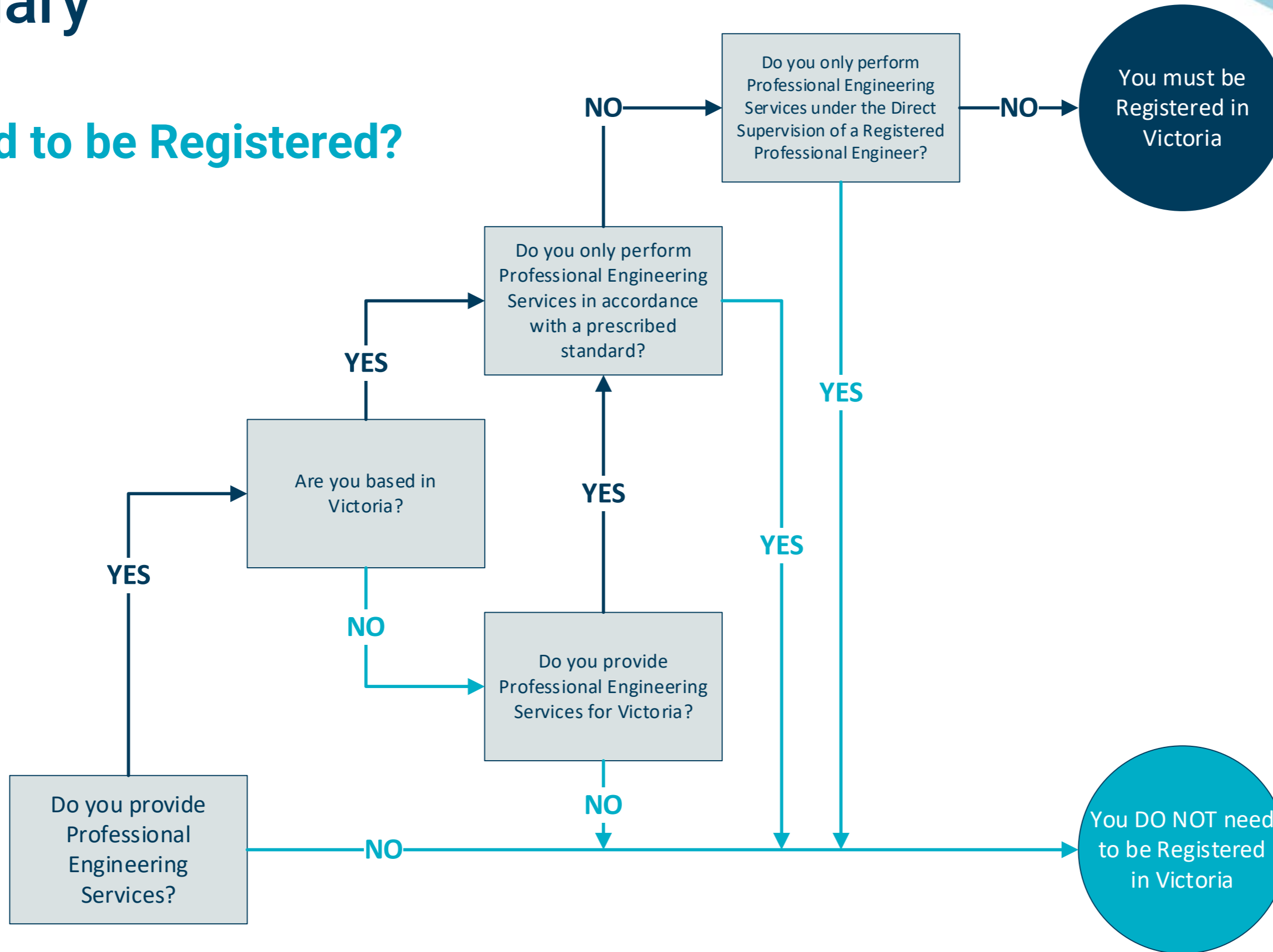
A prescriptive standard is a procedural document that provides a well-described and comprehensive approach and criteria to complete an engineering service. It usually applies to a repetitive engineering activity that is:

- routine,
- involves little or no choice or judgement,
- has minimal scope for misinterpretation, and
- requires no scientifically based calculations.



Summary

Do I need to be Registered?



Registration

How do I become Registered?

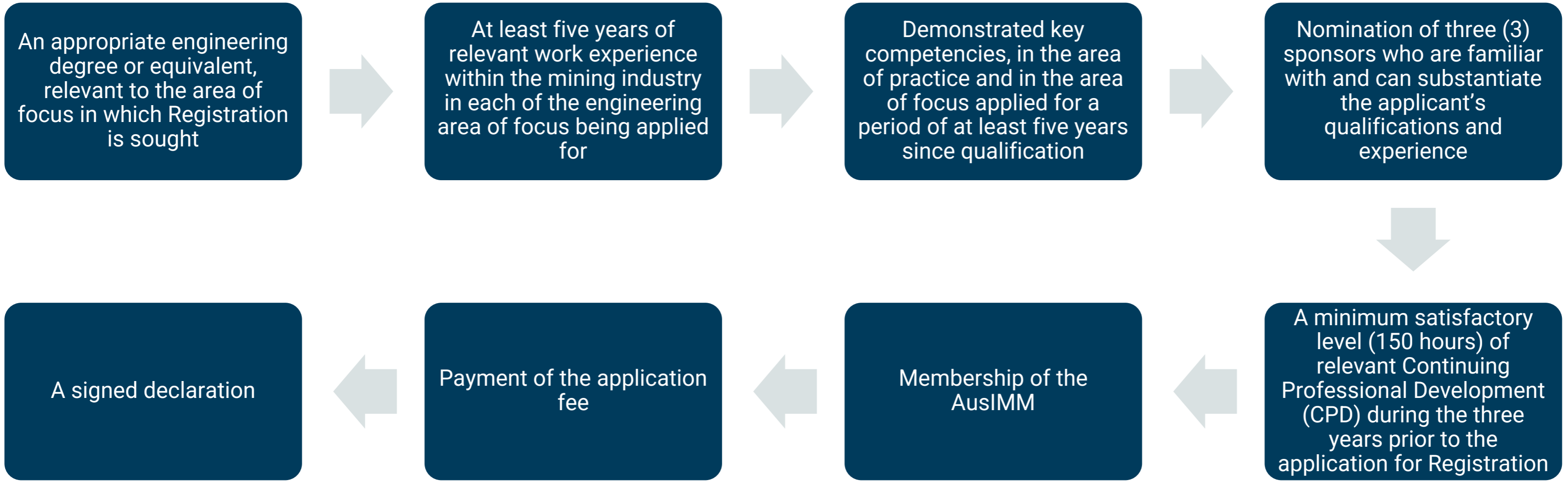
AusIMM has been approved by the Victorian Government to conduct an assessment scheme for Professional Engineers in the following areas of focus within the civil engineering prescribed area of engineering:

- Environmental Engineering (Mining), and
- Geotechnical Engineering (Mining)

This scheme only relates to the assessment of qualifications and competency, AusIMM does not have the authority to approve your Registration.

Registration

Eligibility Requirements (AusIMM Members)



Additional Requirements

Code of Conduct

- 1 – Know and comply with the law
- 2 – Be honest and fair
- 3 – Deliver good practice professional engineering services
- 4 – Inform clients of the consequences of disregarded advice
- 5 – Act in the best interests of a client
- 6 – Act in area of professional competence
- 7 – Directly supervise
- 8 – Maintain confidentiality
- 9 – Manage conflicts of interest
- 10 – Disclose endorsements and referrals
- 11 – Be impartial and objective
- 12 – Inform and communicate with clients
- 13 – Maintain client records
- 14 – Resolve disputes

Professional Engineers Registration Act 2019

No. 26 of 2019

Part 2—Registration of engineers

33 Engineers must comply with approved codes of conduct

A registered professional engineer must comply with any code of conduct approved under this Division that is applicable to the area of engineering in respect of which the engineer is registered.

Registration

More Information

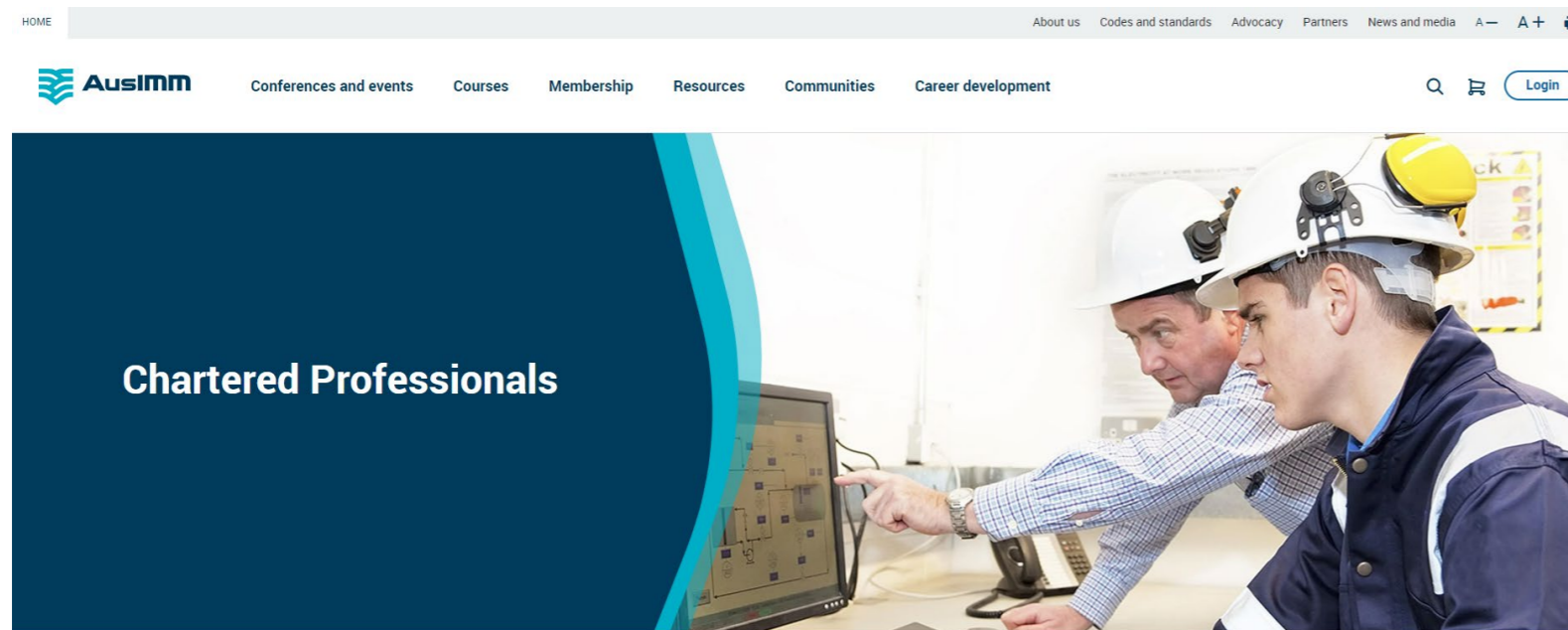
You can find more information on the registration of Professional Engineers in Victoria:

On the Chartered Professional page of the AusIMM website:

<https://www.ausimm.com/career-development/accreditation/chartered-professionals/>

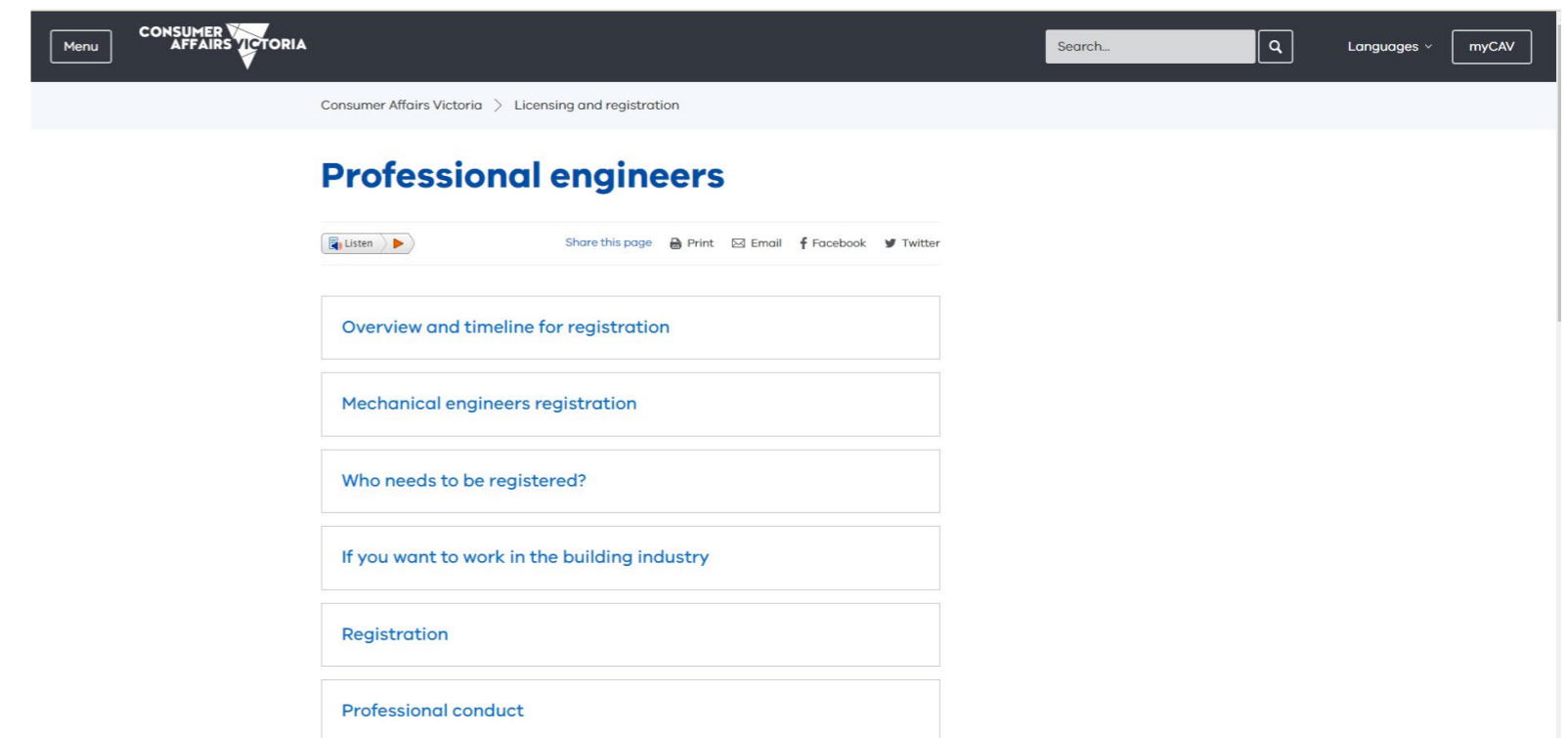
On the Professional Engineers page of the Consumer Affairs Victoria website:

<https://www.consumer.vic.gov.au/licensing-and-registration/professional-engineers>



Why become an AusIMM Chartered Professional?

AusIMM Chartered Professionals make a significant contribution to the global mining community. With a multi-disciplinary accreditation and high-level recognition, you can achieve prominence in your field with AusIMM's Chartered Professional program.





Knowledge



Recognition



Networking



Trusted voice



Codes and standards



Servicing professionals



Connections and collaborations



Digital presence